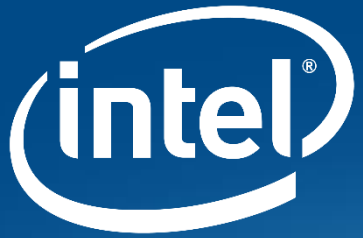


Legal Disclaimer

THIS PRESENTATION CONTAINS THE GENERAL INSIGHTS AND OPINIONS OF INTEL CORPORATION (INTEL). THE INFORMATION IN THIS PRESENTATION IS PROVIDED FOR INFORMATION ONLY AND IS NOT TO BE RELIED UPON FOR ANY OTHER PURPOSE THAN EDUCATIONAL. USE AT YOUR OWN RISK! INTEL MAKES NO REPRESENTATIONS OR WARRANTIES REGARDING THE ACCURACY OR COMPLETENESS OF THE INFORMATION IN THIS PRESENTATION. INTEL ACCEPTS NO DUTY TO UPDATE THIS PRESENTATION BASED ON MORE CURRENT INFORMATION. INTEL IS NOT LIABLE FOR ANY DAMAGES, DIRECT OR INDIRECT, CONSEQUENTIAL OR OTHERWISE, THAT MAY ARISE, DIRECTLY OR INDIRECTLY, FROM THE USE OR MISUSE OF THE INFORMATION IN THIS PRESENTATION. NO LICENSE, EXPRESS OR IMPLIED, BY ESTOPPEL OR OTHERWISE, TO ANY INTELLECTUAL PROPERTY RIGHTS IS GRANTED BY THIS DOCUMENT. EXCEPT AS PROVIDED IN INTEL'S TERMS AND CONDITIONS OF SALE FOR SUCH PRODUCTS, INTEL ASSUMES NO LIABILITY WHATSOEVER AND INTEL DISCLAIMS ANY EXPRESS OR IMPLIED WARRANTY, RELATING TO SALE AND/OR USE OF INTEL PRODUCTS INCLUDING LIABILITY OR WARRANTIES RELATING TO FITNESS FOR A PARTICULAR PURPOSE, MERCHANTABILITY, OR INFRINGEMENT OF ANY PATENT, COPYRIGHT OR OTHER INTELLECTUAL PROPERTY RIGHT.

Risk Factors

The above statements and any others in this document that refer to plans and expectations for the first quarter, the year and the future are forward-looking statements that involve a number of risks and uncertainties. Words such as “anticipates,” “expects,” “intends,” “plans,” “believes,” “seeks,” “estimates,” “may,” “will,” “should” and their variations identify forward-looking statements. Statements that refer to or are based on projections, uncertain events or assumptions also identify forward-looking statements. Many factors could affect Intel’s actual results, and variances from Intel’s current expectations regarding such factors could cause actual results to differ materially from those expressed in these forward-looking statements. Intel presently considers the following to be the important factors that could cause actual results to differ materially from the company’s expectations. Demand could be different from Intel’s expectations due to factors including changes in business and economic conditions; customer acceptance of Intel’s and competitors’ products; supply constraints and other disruptions affecting customers; changes in customer order patterns including order cancellations; and changes in the level of inventory at customers. Uncertainty in global economic and financial conditions poses a risk that consumers and businesses may defer purchases in response to negative financial events, which could negatively affect product demand and other related matters. Intel operates in intensely competitive industries that are characterized by a high percentage of costs that are fixed or difficult to reduce in the short term and product demand that is highly variable and difficult to forecast. Revenue and the gross margin percentage are affected by the timing of Intel product introductions and the demand for and market acceptance of Intel’s products; actions taken by Intel’s competitors, including product offerings and introductions, marketing programs and pricing pressures and Intel’s response to such actions; and Intel’s ability to respond quickly to technological developments and to incorporate new features into its products. The gross margin percentage could vary significantly from expectations based on capacity utilization; variations in inventory valuation, including variations related to the timing of qualifying products for sale; changes in revenue levels; segment product mix; the timing and execution of the manufacturing ramp and associated costs; start-up costs; excess or obsolete inventory; changes in unit costs; defects or disruptions in the supply of materials or resources; product manufacturing quality/yields; and impairments of long-lived assets, including manufacturing, assembly/test and intangible assets. Intel’s results could be affected by adverse economic, social, political and physical/infrastructure conditions in countries where Intel, its customers or its suppliers operate, including military conflict and other security risks, natural disasters, infrastructure disruptions, health concerns and fluctuations in currency exchange rates. Expenses, particularly certain marketing and compensation expenses, as well as restructuring and asset impairment charges, vary depending on the level of demand for Intel’s products and the level of revenue and profits. Intel’s results could be affected by the timing of closing of acquisitions and divestitures. Intel’s results could be affected by adverse effects associated with product defects and errata (deviations from published specifications), and by litigation or regulatory matters involving intellectual property, stockholder, consumer, antitrust, disclosure and other issues, such as the litigation and regulatory matters described in Intel’s SEC reports. An unfavorable ruling could include monetary damages or an injunction prohibiting Intel from manufacturing or selling one or more products, precluding particular business practices, impacting Intel’s ability to design its products, or requiring other remedies such as compulsory licensing of intellectual property. A detailed discussion of these and other factors that could affect Intel’s results is included in Intel’s SEC filings, including the company’s most recent reports on Form 10-Q, Form 10-K and earnings release.



Das digitale Energiesystem der Zukunft

Oliver Roos

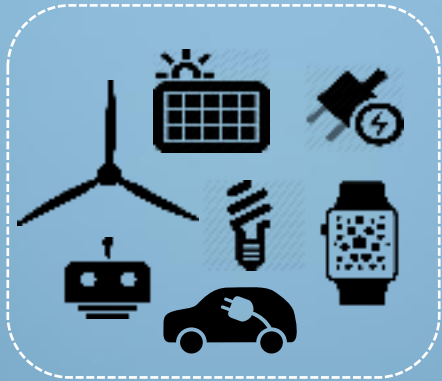
16. Sept. 2015

ver 1.0

ISG EMEA ENERGY

The (R)evolution of the future smarter energy system

OPPORTUNITIES AND CHALLENGES



Increased input sources



Increased type & volume



Increased partners consumption

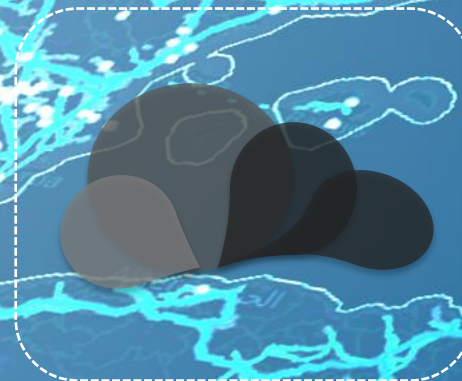
WHAT IS NEEDED



Better visibility & control



Trusted security model



Responsive to business needs

Intel® IoT Platform Capabilities:

Increasing IoT intelligence and value over time

“Things” easily connect, communicate and work together

Connect



“Things” and networks are monitored, secure and managed

Secure & Manage



Analyze, expose, and manage data to provide business insights

Analyze & Expose



Predict how the devices or processes perform and take actions

Predict



Innovate, optimize end to end systems, autonomous behavior

Optimize



Product Experience - Consistency - Interoperability

Critical Tenets to Drive IoT Leadership

Services: Infrastructure to Monetize HW, SW, and Data Management from Edge to Cloud

– Managing Systems and Monetizing the Value Data Provides Customers (McAfee/WindRiver/Mashery/Services Creation Platform)

Customer Value Visualized by Broad Analytics Infrastructure from Edge to Cloud

– Real-Time, Insightful, and Secure Analytics

Seamless Data Ingestion, Processing and System Control

– Broad Protocol Normalization Support/Protocol Abstraction, Real-Time Data Streaming, Closed-Loop Control Systems

Edge Devices and Gateways Securely Discovered by Cloud in <2 Seconds

– Broad OS and Comms Support, HW-level Identity, World-Class APIs + API Management (Mashery)

Edge Devices and Gateways Setup from Box to Cloud in <2 Minutes

– Enabled by Interoperable “Building Block” Architecture with Robust yet Efficient Middleware Agents (McAfee/WindRiver)

World-Class Security as the Foundation with Embedded HW and SW-Level Protection

- Secure Boot, Identity Protection, Whitelisting, & Encryption from Edge to Cloud (McAfee/WindRiver)

Flexible Infrastructure Framework

